

**MINISTRY OF HEALTH OF UKRAINE
POLTAVA STATE MEDICAL UNIVERSITY**



**EDUCATIONAL AND PROFESSIONAL PROGRAM
MEDICINE**

Second level of higher education

Specialty 222 Medicine

Field of knowledge 22 Health

Educational qualification: Master of Medicine

APPROVED

Minutes No. 9 of the Academic Council of the Academy as of May 26, 2016

Educational and professional program comes into effect on 01 September 2016.

Rector's Order No. 150-a as of May 27, 2016

With amendments and addendum approved by the Academic Council of the University

Minutes No. 2 of the Academic Council of the University as of June 23, 2021

Educational and professional program comes into effect on 01 September, 2021.

Rector's Order No. 421 as of June 25, 2021

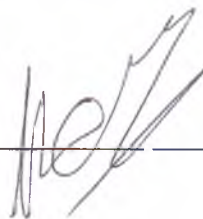
Poltava 2021

**LETTER OF APPROVAL OF THE
EDUCATIONAL AND PROFESSIONAL PROGRAM**

Agreed

Head of the Academic Affairs Department _____ I.I. Starchenko

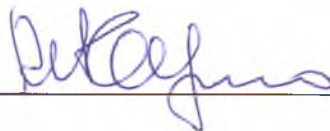
"21" June 2021



Agreed

Dean of the Medical Faculty I _____ M.M. Ryabushko

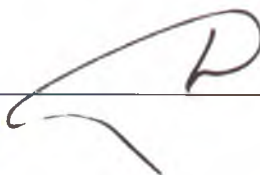
"21" June 2021



Agreed

Dean of the Medical Faculty II _____ D.V. Kapustianskyi

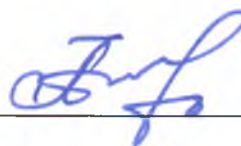
"21" June 2021



Agreed

Dean of the International Faculty _____ L.V. Buria

"21" June 2021



FOREWORD

Academic and professional program Medicine of the second (master's) level of higher education in the specialty 222 “Medicine”, the field of knowledge 22 Healthcare, is developed in accordance with the Law of Ukraine “On Higher Education”, draft Standard of Higher Education of Ukraine of the second (master's) level of higher education in the field of knowledge 22 “Healthcare”, specialty 222 Medicine, discussed at the XIII All-Ukrainian scientific and practical conference with international participation “Topical issues of medical education” (12-13 May 2016, Ternopil), Resolution of the Cabinet of Ministers as of 29.04.2015 No. 266 “On approval of the list of fields of knowledge and specialties in which higher education applicants are trained”, Resolution of the Cabinet of Ministers of Ukraine as of 23.11.2011 No. 1341 “On approval of the National Qualifications Framework” as amended in accordance with the Resolutions of the Cabinet of Ministers as of 12.06.2019 No.509, 25.06.2020 No.519[https://zakon.rada.gov.ua/laws/show/519-2020-%D0%BF - n2](https://zakon.rada.gov.ua/laws/show/519-2020-%D0%BF-n2), Resolution of the Cabinet of Ministers of Ukraine as of 28.03.2018 No.334 “On approval of the Procedure for a single state qualification examination for applicants for a master's degree in the field of knowledge “Healthcare”, the Resolution of the Cabinet of Ministers of Ukraine as of 30.12.2015 No.1187 “On approval of license conditions for academic activities of educational institutions” and other applicable regulations.

Academic and professional program is a normative document, which defines the profile of academic and professional program in specialty 222 “Medicine”, the list of program components and their logical sequence, the number of ECTS credits required to implement this program, the form of certification of higher education applicants.

Academic and professional program was developed by the working group of Poltava State Medical University, consisting of:

Guarantor of APP – Skrypnyk I.M., Doctor of Medical Sciences, Professor, Honored Master of Science and Technology of Ukraine, Professor of the Department of Internal Medicine No.1.

Members of the working group:

Sheiko V.D. – Doctor of Medical Sciences, Professor, Head of the Department of Surgery No.2;

Liakhovskiy V.I. – Doctor of Medical Sciences, Professor, Head of the Department of Surgery No.1;

Katerenchuk I.P. – Doctor of Medical Sciences, Professor, Head of the Department of Internal Medicine No.2 with Occupational Diseases;

Kryuchko T.O. – Doctor of Medical Sciences, Professor, Head of the Department of Pediatrics No.2;

Pokhylko V.I. – Doctor of Medical Sciences, Professor, Professor of the Department of Pediatrics No.1 with Propaedeutics and Neonatology;

Hromova A.M. – Doctor of Medical Sciences, Professor, Head of the Department of Obstetrics and Gynecology No.1;

Koval T.I. – Doctor of Medical Sciences, Professor, Head of the Department of Infectious Diseases and Epidemiology;

Delva M.Yu. – Doctor of Medical Sciences, Professor, Head of the Department of Nervous Diseases with Neurosurgery and Medical Genetics;

Holovanova I.A. – Doctor of Medical Sciences, Professor, Head of the Department of Social Medicine, Organization and Economics of Healthcare with Biostatistics;

Starchenko I.I. – Doctor of Medical Sciences, Professor, Head of the Department of Pathological Anatomy with the Sectional Course;

Davydenko H.M. – Candidate of Medical Sciences, Associate Professor, responsible for accreditation and licensing, Deputy Director of the Educational and Scientific Institute of Postgraduate Education;

Lokhmatova N.M. – Candidate of Medical Sciences, Associate Professor, Head of the Scientific and Methodological Laboratory for Dentists;

Vovk O.Ya. – Chief Physician of the Municipal Enterprise “Poltava Regional Clinical Oncology Dispensary of Poltava Regional Council”;

Kryvchun V.V. – the 2nd-year student of the Medical Faculty No.1 of Poltava State Medical University.

Reviews from external stakeholders:

1. Lysak V.P. – Honored Doctor of Ukraine, Candidate of Medical Sciences, Associate Professor, Director of the Department of Healthcare of Poltava Regional State Administration.

2. Harmash P.P. – Head of the Healthcare Department of Chernihiv Regional State Administration.

3. Oksak H.A. – Chief Physician of the Municipal Enterprise “Poltava M.V. Sklifosovsky Regional Clinical Hospital of Poltava Regional Council”.

4. Vakaliuk I.P. – Doctor of Medical Sciences, Professor, Head of the Department of Internal Medicine No.2 and Nursing, Academician of the Ukrainian Academy of Sciences, Vice-Rector for Research of Ivano-Frankivsk National Medical University.

5. Pogorilko O.V. – Candidate of Medical Sciences, Chief Physician of the Municipal Enterprise “Regional Institution for Psychiatric Care of Poltava Regional Council”.

6. Diachenko L.V. – Deputy Chairman of Poltava Regional Branch of Association of Pathologists of Ukraine, Head of the Department of Pediatric Pathology of Poltava Regional Pathological Bureau.

Updates, revisions, amendments and supplements to the academic and professional program Medicine for the second (master's) level of higher education in the specialty 222 Medicine, the field of knowledge 22 Healthcare:

| Academic year | Approval by the Academic Council of UMSA (from 24.02.2021 PSMU) (date, minutes No.) | Rector's order on the introduction of APP into effect (date, order No.) | Date of introduction of APP into effect |
|---------------|---|---|---|
| 2017/2018 | As of 11 July 2017 No. 13 | As of 12 July 2017 No. 228 | From 01 September 2017 |
| 2018/2019 | As of 20 June 2018 No. 10 | As of 21 June 2018 No. 261 | From 01 September 2018 |
| 2019/2020 | As of 19 June 2019 No. 10 | As of 24 June 2019 No. 221 | From 01 September 2019 |
| 2020/2021 | As of 30 June 2020 No. 12 | As of 02 July 2020 No. 331 | From 01 September 2020 |
| 2021/2022 | As of 23 June 2021 p. № 2 | As of 25 June 2021 p. № 421 | From 01 September 2021 |

1. Profile of academic and professional program in the specialty 222 Medicine

| Components | Description of academic and professional program |
|---|---|
| 1. General information | |
| Full name of the institution of higher education and structural unit | Poltava State Medical University Medical Faculty No.1 Medical Faculty No.2 Foreign Students Training Faculty |
| Degree of higher education and title of qualification in the original language | Academic degree – Master Specialty – 222 Medicine Academic qualification – Master of Medicine Professional qualification – Medical Doctor |
| The official name of academic and professional program | Medicine |
| Type of diploma and scope of academic and professional program | Master's degree, single issue, 360 ECTS credits, duration of study: 5 years 10 months. |
| Availability of accreditation | - National Agency for Higher Education Quality Assurance; - Ukraine; - Not accredited |
| Cycle / level | National Qualifications Framework of Ukraine – level 7; FQ – EHEA – the second cycle, QF-LLL – level 7 |
| Prerequisites | Terms of admission are determined by the “Rules of admission to Poltava State Medical University”. A person has the right to obtain a master's degree on the basis of complete general secondary education, subject to the successful completion of an external independent evaluation of the quality of education. Poltava State Medical University admits for the second year of study for a master's degree in 222 “Medicine” applicants who have obtained the educational qualification level of junior specialist, educational and professional degree of junior bachelor in “Medical care” (5.12010101), “Nursing care” 5.12010102, 223 “Nursing” subject to successful passing of entrance professional tests. |
| Language(s) of instruction | Ukrainian, English. |
| Validity of academic and professional program | 6 years |
| Internet address of the permanent placement of the description of academic and professional program | https://www.umsa.edu.ua/n-process/department-npr/education-and-training-programs |
| 2. The purpose of the educational and professional program | |
| The “Medicine” educational and professional program corresponds to the mission, vision, and key values of the Academy and is aimed at forming specialized conceptual knowledge based on modern scientific achievements in the field of health care, which will provide academic training for highly competent in their professional activity specialists capable of solving complex problems in unusual | |

| | |
|--|--|
| situations or new environments, carrying out research and innovating; conducting a highly autonomous training at the next level of higher education; the program forms the ability to operate effectively in a globalized information society, based on one's worldview and social position. | |
| 3. Characteristics of the educational and professional program | |
| Subject area (field of knowledge, specialty, specialization) | Field of knowledge – 22 "Health care" Specialty – 222 "Medicine" |
| Orientation of the educational and professional program | The educational and professional program has an applied orientation in the field of health care, prevention, diagnosis, and treatment of human diseases. |
| The main focus of the educational and professional program | Higher education in the knowledge field of 22 "Health care", specialty of 222 "Medicine" Keywords: health care, medicine, higher education, Master, doctor. |
| Features of the program | The uniqueness of EP comes down to the combination of classical university education, which ensures forming a certain worldview, developing thinking, unique abilities of the individual while acquiring full professional competencies; practicing in educational and scientific medical centers of the university; having experience in surgical, cardiological and gastroenterological schools of the university; contributing to close connection between training medical professionals and science, the latest technologies, and clinical practice. Progress in the field of basic and applied medical research and the implementation of its results in practice necessitates the training of medical professionals at the University with the use of innovative technologies as a part of medical training. |
| 4. The graduates' suitability for employment and further training | |
| Suitability for employment | The specialist is prepared to work according to DK 009-2010: Section Q. Health and social care Section 86. Health care Group 86.1 Hospital activities Class 86.10 Hospital activities Group 86.2 Medical and dental practice Class 86.21 General medical practice Class 86.22 Specialized medical practice Group 86.9 Other health care activities Class 86.90 Other health care activities After finishing the Master's educational program in "Medicine", the specialist can perform professional work as: an intern (PC code – 3229); a trainee doctor (PC code – 3221); |
| Further training | To further his training in the specialty of "Medicine" the specialist must enter the postgraduate education program, i.e., internship (primary specialization) which provides training in educational programs in a particular specialty from the list approved by the order of the Ministry of Health of Ukraine from 23/02/2005 №81, and can also enter a PhD educational and scientific program. After completing internship and residency, the specialist is assigned a qualification – a doctor who can perform the professional work specified in DK 003: 2010 and can hold a respective medical position: Class 222 Medical professionals (excluding nurses). Subclass 2221 Professionals in the field of medical business (except for Dentistry). |

| | |
|-----------------------------------|--|
| | <p>Group 2221.2 Doctors. Subclass 2225 Professionals in the field of disease prevention. Group 2225.2 Doctors, specialists in the field of disease prevention. Group 2229.2 Medical professionals (excluding nursing and midwifery). In the future, specialists can be retrained and trained in secondary specialization, acquire another medical specialty and perform appropriate professional activities. Mastering professional skills will ensure the continuous professional development of doctors in the fields of topic-based improvement, information and internships, and other types of postgraduate education.</p> |
| 5. Teaching and assessment | |
| Teaching and learning | <p>The main types of training at the Poltava State Medical University are lectures, practical classes, seminars, individual classes, consultations, defense of medical history, independent work under the guidance of a teacher, independent extracurricular work, internship. Student-centered learning, problem-oriented learning, self-learning, practice learning, combining educational activities of students with research, simulation learning, blended (e-learning), which allows meeting the individual educational needs of higher education students.</p> |
| Assessment | <p>Control measures for the assessment of educational activities include current, intermediate, and final assessment of knowledge, skills, and abilities of higher education students. Final control includes term control and state certification of applicants. Grades "Excellent", "Good", "Satisfactory" are set according to the exam results, final modular tests, and apprenticeship. The grade "Passed" is given based on the test results.</p> <p>According to the levels in the University, the following types of assessment are carried out: self-control, departmental (medical history, modular test, final module test, FSC, etc.), rector's (KTI), and ministerial (USQE). Self-control is designed for self-assessing the quality of retaining learning material in a particular discipline. The departmental assessment is carried out to assess the level of higher education training at different stages of studying a discipline and is carried out in the form of introductory, current, end-point, and final assessments. Rector's and ministerial assessment is designed to diagnose the quality of the educational process, determine the quality of knowledge acquisition and compare real learning outcomes with those expected following the requirements set out in regulations.</p> <p>The scope and means of determining the level of acquisition of knowledge, skills, and abilities that are subject to control are determined by the departments in the work program and syllabus of the discipline and brought to the notice of students at the first lesson.</p> <p>The unified state qualification exam is carried out following the Procedure for the implementation of the unified state qualification exam for applicants for a Master's degree in the knowledge field of "Health care" and consists of the following components:</p> <ul style="list-style-type: none"> – integrated test exam "KROK", which assesses the quality of training standards of higher education and is conducted by the State Organization of "Center for Testing Professional Competence of Specialists with Higher Education Majoring in "Medicine" and "Pharmacy" at the Ministry of Health of Ukraine"; – English for professional purposes exam which assesses professionally focused English competence of higher education students and is conducted by the State Organization of "Center for Testing Professional Competence of Specialists with Higher Education Majoring in "Medicine" and "Pharmacy" at |

| | |
|---|---|
| | <p>the Ministry of Health of Ukraine";</p> <p>– objective structured practical (clinical) exam, which assesses the readiness of the graduate to pursue professional activities following the requirements of the higher education standard by demonstrating practical (clinical) components of professional competence on a real object or model and conducted by the examination commission of the higher education institution.</p> |
| 6. Program competencies | |
| Integral competence | Being able to solve complex specialized problems and practical tasks in when carrying out professional activities in the field of health care in the specialty of "Medicine", or in the learning process, which involves research and/or innovation and is characterized by complexity and uncertainty of conditions and requirements. |
| General Competences (GC) | <ol style="list-style-type: none"> 1. The ability to think in abstract terms, to analyze, and synthesize, the ability to learn and master modern knowledge. 2. The ability to apply knowledge in practice. 3. Knowing and understanding of the subject area of the professional activity. 4. The ability to adapt and act in a new situation. 5. The ability to make informed decisions; work in a team; having interpersonal skills. 6. The ability to communicate in the state language both orally and in writing; the ability to communicate in a foreign language. The ability to use international Greek and Latin terms, abbreviations, and clichés in professional oral and written speech. 7. Being skilled at using information and communication technologies. 8. Definiteness and persistence in terms of tasks and responsibilities. 9. The ability to act socially responsibly and consciously. 10. The desire to preserve the environment. |
| Special (professional, subject) competencies | <ol style="list-style-type: none"> 1. Patient interviewing skills. 2. The ability to determine the required list of laboratory and instrumental studies and evaluate their results. 3. The ability to establish a preliminary and clinical diagnosis of the disease. 4. The ability to determine the required mode of work and rest in the disease treatment. 5. The ability to determine the nature of nutrition in the treatment of diseases. 6. The ability to determine the principles and nature of disease treatment. 7. The ability to diagnose emergencies. 8. The ability to determine the tactics of emergency medical care. 9. Emergency care skills. 10. The ability to carry out medical and evacuation measures. 11. Having skills to perform medical manipulations. 12. The ability to determine the tactics of physiological pregnancy, physiological childbirth, and the postpartum period. Counseling skills on family planning and contraception selection. 13. The ability to carry out sanitary and hygienic and preventive measures. 14. The ability to plan and carry out preventive and anti-epidemic measures against infectious diseases. 15. The ability to determine the tactics of managing people subject to dispensary supervision. |

- | | |
|--|--|
| | <ul style="list-style-type: none"> 16. The ability to conduct a performance examination. 17. The ability to keep medical records. 18. The ability to conduct epidemiological and medical-statistical studies of public health; process state, social, economic, and medical information. 19. The ability to assess the impact of the environment, socio-economic and biological determinants on the health of the individual, family, and population. 20. The ability to analyze the activities of a doctor, department, health care institution, to take measures to ensure the quality of medical care and improve the efficiency of medical resources. 21. The ability to conduct activities for the organization and integration of medical care and marketing medical services. |
|--|--|

7. Program learning outcomes

1. To know the structure and functions of particular organs and systems and the human body as a whole in the norm, in case of pathological processes, diseases; be able to use the acquired knowledge in further medical training and practice.
2. To collect data on patient complaints, life history (professional history in particular) in a health care facility and/or at a patient's home, according to the standard survey scheme.
3. To assign and analyze additional (mandatory and optional) examination methods (laboratory, radiological, functional, and/or instrumental). To evaluate information for differential diagnosis of diseases (according to list 2), using knowledge about the person, his or her organs and systems, based on the results of laboratory analyses and instrumental examination (according to list 4).
4. To establish a preliminary and clinical diagnosis of the disease (according to list 2) based on leading clinical symptoms or syndromes (according to list 1) by making an informed decision and carrying out logical analysis, using the most probable or syndromic diagnosis, laboratory and instrumental examination, conclusions of differential diagnosis, knowledge about a person, his or her organs and systems, while complying to the relevant ethical and legal norms.
5. To determine the necessary frame for work and rest when treating the disease (according to list 2) in a health care facility, at the patient's home, and at the stages of medical evacuation, including in the field, based on a preliminary clinical diagnosis, using knowledge about the person, his or her organs and systems, complying with the relevant ethical and legal norms, by making an informed decision according to existing algorithms and standard schemes.
6. To prescribe necessary medical nutrition when treating the disease (according to list 2), in a health care facility, at the patient's home and the stages of medical evacuation, including in the field based on a preliminary clinical diagnosis, using knowledge about the person, his or her organs and systems, adhering to the relevant ethical and legal norms, by making an informed decision according to existing algorithms and standard schemes.
7. To determine the nature of the disease treatment (conventional, surgical) and its principles (according to list 2) in a health care facility, at the patient's home, and the stages of medical evacuation, including in the field based on a preliminary clinical diagnosis, using knowledge about the person, his or her organs and systems, adhering to the relevant ethical and legal norms, by making an informed decision according to existing algorithms and standard schemes.
8. To diagnose emergencies and establish a diagnosis (according to list 3) by making an informed decision and assessing the human condition under any circumstances (at home, on the street, in a health care facility), including in emergencies, in field conditions, in conditions of lack of information and limited time, using standard methods of physical examination and possible anamnesis, knowledge about a person, his or her organs and systems, adhering to the relevant ethical and legal norms.
9. To determine the tactics of emergency medical care, under any circumstances, using knowledge about the person, his or her organs and systems, complying with the relevant ethical and legal norms, by making an informed decision, based on the diagnosis (list 3) in a limited

- time with standard schemes.
10. To provide emergency medical care under any circumstances, using knowledge of the person, his or her organs and systems, adhering to the relevant ethical and legal norms, by making an informed decision, based on a diagnosis of emergency (list 3) for a limited time according to certain tactics using standard schemes.
 11. To organize and conduct medical and evacuation measures among the population and servicemen in emergencies, including in the field, during the detailed stages of medical evacuation, taking into account the existing system of medical and evacuation support.
 12. To perform medical manipulations (according to list 5) in a health care facility, at home, or work based on a previous clinical diagnosis and/or indicators of the patient's condition, using knowledge of the person, his or her organs and systems, complying with the relevant ethical and legal norms, by adopting reasonable solutions and using standard techniques.
 13. To assess the general condition of pregnant women, mothers, and parturients in a health care facility based on anamnestic data, general examination, bimanual, external, and internal obstetric examination. To determine the tactics of physiological pregnancy and childbirth, as well as the postpartum period. To consult on family planning and selection of contraceptive methods based on anamnestic data, general examination, and gynecological examination of women, using knowledge of women's reproductive organs, complying with the relevant ethical and legal norms.
 14. To implement a system of anti-epidemic and preventive measures, including primary prevention measures in the health care facility and beyond, based on data on the health of the population, the presence of environmental impact, determinants of health, using existing methods within the framework of primary health care. To organize secondary and tertiary prevention measures among the assigned population group, using a generalized procedure for assessing the state of human health (screening, preventive medical examination, seeking medical care).
 15. To plan and implement preventive and anti-epidemic measures to prevent the spread of infectious diseases (according to the list 2) in a health care facility based on the results of epidemiological surveys of infectious diseases, epidemiological analysis, using existing preventive and anti-epidemic methods. To identify risk group, risk areas, time of risk, and risk factors in the health care institution, using statistical and laboratory methods and carry out epidemiological analysis of infectious diseases of the population. To diagnose infectious diseases in the early stages (according to list 2), carry out primary anti-epidemic measures in the center of infectious diseases.
 16. To determine the tactics of management of people subject to dispensary supervision in a health care institution or at home based on the obtained data on the patient's health, using standard schemes, knowledge about the person, his or her organs and systems, in full compliance with relevant ethical and legal norms, by adopting reasonable decisions.
 17. To conduct an examination of working capacity by determining the presence and degree of disability, type, and duration of disability with the issuance of relevant documents in a health care facility based on data on the disease and its course, features of professional activity.
 18. To maintain medical records of the patient and the population in compliance with regulatory documents, using standard technology. To prepare reports on personal production activities, using official accounting documents in the standard form.
 19. To conduct epidemiological, medical and statistical studies of public health; to process state, social, economic, and medical information under any circumstances using standard procedures, in particular, modern computer information technologies.
 20. To assess the impact of the environment, socio-economic and biological determinants on the health of the individual, family, and population. To carry out the analysis of morbidity of the population, revealing risk groups, risk areas, time, and risk factors in a health care institution, using statistical and laboratory methods.
 21. To analyze the activities of a doctor, department, health care institution, to identify defects in the activities and the reasons behind them. To take measures to ensure the quality of medical

- care and to improve the efficiency of medical resources.
22. To carry out measures for the organization, integration of medical care and marketing of medical services.
 23. To form goals and determine the structure of personal activity based on the result of the analysis of certain social and personal needs.
 24. To adhere to a healthy lifestyle, use the techniques of self-regulation and self-control.
 25. To be aware of and guided in their activities by civil rights, freedoms and responsibilities, to constantly improve their professional and cultural levels.
 26. To comply with the requirements of ethics, bioethics and deontology in one's professional activities.
 27. To ensure the necessary level of individual safety (personal and carers) in the event of typical dangerous situations in the individual field of activity.

8. Resource support for program implementation

| | |
|--------------------|---|
| Staffing | <p>The scientific and pedagogical staff of the departments of the Academy fully provide higher education training in the specialty 222 "Medicine" following the License Terms (Resolution of the Cabinet of Ministers of Ukraine "On Approval of License Conditions for Educational Activities of Educational Institutions" from 30/12/2015 №1187 as amended on 10/05/2018 №347). The formation of a high-quality research and teaching staff is ensured by providing postgraduate scientific training for graduates of the University and involving teachers with degrees and academic titles on a competitive basis by concluding contracts. Members of the support group who implement the educational component of the educational and professional program have qualifications and relevant specialties: higher education in the specialty, academic degree or title, confirmed level of scientific and professional activity. 100% of scientific and pedagogical employees of the support group are full-time employees of the university. Teaching lecture materials for higher education seekers are entirely provided by scientific and pedagogical workers who have an academic degree and title. Teaching in English is carried out by research and teaching staff who have certificates confirming English proficiency at the B2 level.</p> |
| Procurement | <p>The material and technical base of the Poltava State Medical University allows to carry out the educational process, scientific and medical work at the modern level according to requirements of the state standards of education concerning expert training, the curriculum, and programs of components of the educational and professional program. The studying conditions provided to higher education students at the University fully meet the hygienic requirements.</p> <p>The University has a total area of 51,343.9 m². There are 15 buildings on its balance sheet, including 5 educational buildings (total area is 23202.2 m²), four dormitories (total area is 23476.2 m²), sports and recreation complex, dining room, utility buildings, vivarium, hangars, health sports camp. All buildings have technical passports. The area of educational premises that are directly used in the educational process consists of educational premises located in the University buildings with a total area of 21179.8 m² and educational premises of departments located in health care facilities with an area of 12452.45 m².</p> <p>Higher education seeker training is carried out on clinical bases that have adequate logistics meeting the requirements for health care facilities. Diagnostic equipment is used in practical classes in clinics: ultrasound diagnostic devices, computer tomographs, X-ray diagnostic devices, etc. Lecture halls are 100% equipped with multimedia equipment.</p> <p>To increase the level of knowledge in the specialty and in-depth practical</p> |

| | |
|--|---|
| | <p>training, there have been created several diagnostic centers in the University: Educational and Consultative Diabetological Center, Educational and Practical Laboratory of Clinical Rehabilitation, Educational and Practical Center for Rehabilitation of Cancer Patients, Educational and Practical Training Center of Modern Perinatal Medicine. Maksymovych-Ambodyka, Training and Practical Center for General Practice - Family Medicine, Poltava Regional Antihypertensive Center, Poltava Regional Training Research and Practice Center for Interventional Radiology, Training and Diagnostic Pulmonology Center, Training and Diagnostic and Medical Diseases Center for Patients, Educational-diagnostic and treatment center for patients with primary headache.</p> <p>In May 2020, a new Simulation Center was opened, equipped with modern simulators to practice practical skills and conduct OSCE as part of the State certification of applicants for the second (master's) level of higher education in the specialty 222 "Medicine".</p> <p>The book supply of most components of the educational program meets the licensing requirements. There is a virtual reference service, interlibrary loan. All resources and services of the library are presented on the Internet through a blog.</p> <p>Provision of applicants with computers during training fully complies with regulations. The local network of the university is connected to the Internet using a fiber-optic cable with a bandwidth of 1 GB/sec of guaranteed flow. To organize students' access to the Internet, wireless communication is organized, which covers the areas of dormitories №1, №2, №3, №4, libraries, as well as educational and administrative buildings of the University.</p> <p>The material and technical base of the university for conducting practical classes on physical education and work of sports sections is represented by 5 sports halls (2052.2 m²) and sports grounds (3608 m²).</p> |
| <p>Information and educational and methodical support</p> | <p>Information and educational and methodological support meet the licensing conditions of educational activities for the training of specialists at the second (master's) level of higher education and is represented by: schedule of the educational process, curriculum, work programs of disciplines, thematic plans of lectures, practical and seminar classes, syllabi, criteria for assessing knowledge, lists of questions for current and final controls, lists of questions for state exams, lists of situational and test tasks, lists of recommended teaching literature, etc. Educational and methodical documentation is prepared by scientific and pedagogical workers of departments. Provision of students with educational materials from each component of the educational and professional program of the curriculum is 100%.</p> <p>The official website of the University www.umsa.edu.ua contains basic information about its activities and an available electronic resource that contains educational and methodological materials from the components of the educational and professional program, including for the implementation of distance education.</p> |
| <p>9. Academic mobility</p> | |
| <p>National credit mobility</p> | <p>The right to national credit mobility is exercised based on the Law of Ukraine "On Higher Education" and agreements between higher education institutions (scientific institutions) of Ukraine or their main structural units.</p> |
| <p>International credit mobility</p> | <p>The right to international credit mobility is realized based on international agreements on cooperation in education and science, international programs and projects (Erasmus +), and can be exercised by a Ukrainian participant in the educational process on his initiative, supported by the Poltava State</p> |

| | |
|--|--|
| | Medical University, based on individual invitations. |
| Training of foreign higher education applicants | Admission of foreign citizens and stateless persons is carried out under the "Rules of admission to the Poltava State Medical University " based on the results of their training in the preparatory department. Training foreign and stateless higher education applicants is carried out under the "Regulations on the organization of the Educational Process at the Poltava State Medical University." |

2. The list of components of the educational-professional program and their logical sequence

2.1. List of components of the educational and professional program

| Code | Components of the educational program (academic disciplines, practices) | The number of ECTS credits | The form of final control |
|--|--|----------------------------|---------------------------|
| 1 | 2 | 3 | 4 |
| Mandatory components of EPP | | | |
| General training | | | |
| CC1. | Ukrainian Language (for Professional Purposes)* | 3 | FMA |
| CC2. | Philosophy | 3 | FMA |
| CC3. | Foreign Language (for Professional Purposes) | 6 | FMA |
| CC4. | Latin Language and Medical Terminology | 3 | FMA |
| CC5. | Medical Biology | 5,5 | FSC |
| CC6. | Medical and Biological Physics | 4 | FMA |
| CC7. | Medical Chemistry | 4 | FMA |
| CC8. | Biological and Bioorganic Chemistry | 9,5 | FSC |
| CC9. | Human Anatomy | 14,5 | FSC |
| CC10. | Histology, Cytology, and Embryology | 11,5 | FSC |
| CC11. | Physiology | 10 | FSC |
| CC12. | Microbiology, Virology, and Immunology | 8,5 | FSC |
| In Total | | 82,5 | |
| Professional And Practical Training | | | |
| CC13. | Pathomorphology | 7 | FSC |
| CC14. | Pathophysiology | 7 | FSC |
| CC15. | Pharmacology | 7 | FSC |
| CC16. | Hygiene And Ecology | 8 | FMA |
| CC17. | Propaedeutics of Internal Medicine | 6 | FMA |
| CC18. | Propaedeutics of Pediatrics | 5 | FMA |
| CC19. | General Surgery | 6 | FMA |
| CC20. | Internal Medicine, Including Endocrinology, Medical Genetics | 8 | FSC |
| CC21. | Internal Medicine, Including Clinical Pharmacology, Clinical Immunology and Allergology, Occupational Diseases | 9,5 | FSC |
| CC22. | Internal Medicine | 14,5 | FMA |

| | | | |
|--------|---|--------|-----|
| CC23. | Pediatrics | 4,5 | FSC |
| CC24. | Pediatrics with Neonatology and Pediatric Infectious Diseases | 5 | FSC |
| CC25. | Pediatrics with Children's Infectious Diseases | 10,5 | FMA |
| CC26. | Surgery | 4,5 | FSC |
| CC27. | Surgery, Including Pediatric Surgery, Neurosurgery | 7 | FSC |
| CC28. | Surgery, Including Pediatric Surgery | 10 | FMA |
| CC29. | Obstetrics and Gynecology | 10 | FSC |
| CC30. | Social Medicine, Public Health | 9 | FMA |
| CC31. | Otorhinolaryngology | 3 | FMA |
| CC32. | Ophthalmology | 3 | FMA |
| CC33. | Neurology | 4 | FSC |
| CC34. | Psychiatry, Narcology | 4 | FMA |
| CC35. | Infectious Diseases | 6,5 | FMA |
| CC36. | Oncology and Radiation Medicine | 4 | FMA |
| CC37. | Tuberculosis | 3 | FMA |
| CC38. | Emergency and Urgent Medical Care | 3 | FMA |
| CC39. | Training of Reserve Officers in The Knowledge Field of "Health Care". Specialty "Medicine" ** | 10 | FMA |
| CC 40. | Ukrainian as a foreign language for professional purposes | 3** | FMC |
| CC 41. | Emergency surgery | 6** | FMC |
| CC 42. | Infectious, tropical and parasitic diseases | 7,5*** | FMC |
| | | | |
| | | | |

| | | | |
|--|--|--------------|-----------|
| In total | | 179 | |
| Total volume of compulsory components | | 261,5 | |
| Selective Components Of Epp | | | |
| Subjects By Choice | | | |
| SC1. | History of Ukraine And Ukrainian Culture | 3 | FMA |
| SC2. | History of Medicine | 3 | Pass/Fail |
| SC3. | Foreign Language | 3 | FMA |
| SC4. | Life Safety; Basics of Bioethics And Biosafety | 3 | Pass/Fail |
| SC5. | Fundamentals of Leadership | 4 | Pass/Fail |
| SC6. | Professional Communications. Key Competencies | 4 | Pass/Fail |
| SC7. | Science of Law | 4 | Pass/Fail |
| SC8. | Basic Level Foreign Language | 10 | FMA |
| SC9. | Ukrainian as a Foreign Language (Beginner Level) | 10 | FMA |
| SC10. | Clinical Anatomy and Operative Surgery | 3 | FMA |
| SC11. | Medical Informatics | 3,5 | FMA |
| SC12. | Care for Patients | 5 | FMA |
| SC13. | Occupational Health Care | 3 | Pass/Fail |
| SC14. | Deontology in Medicine | 4 | Pass/Fail |
| SC15. | Modern Problems of Biophysics | 3,5 | Pass/Fail |
| SC16. | Foreign Language (second) | 3 | Pass/Fail |
| SC17. | European Standard of Computer Literacy | 3,5 | Pass/Fail |
| SC18. | Foreign Language (Intermediate Level) | 10 | FMA |
| SC19. | Ukrainian as a Foreign Language (Basic Level) | 10 | FMA |
| SC20. | Medical Psychology | 3 | FMA |
| SC21. | Radiology | 4 | FMA |
| SC22. | Nursing Practice | 3 | FMA |
| SC23. | English for Professional Purposes | 3 | FMA |
| SC24. | Foreign Language (second, For Foreign Students) | 3 | Pass/Fail |
| SC25. | Side Effects of Drugs | 3 | Pass/Fail |
| SC26. | Foreign Language for Professional Purposes. Professional Doctor-Patient Communication | 3 | FMA |
| SC27. | Ukrainian as a Foreign Language for Professional Purposes. Ukrainian Professional Speech: Doctor-Patient Communication | 3 | FMA |
| SC28. | Urology | 3 | FMA |
| SC29. | Dermatology, Venereology | 3 | FMA |
| SC30. | Physical Rehabilitation, Sports Medicine | 3 | FMA |
| SC31. | Forensic Medicine. Medical Law of Ukraine | 3 | FMA |
| SC32. | Laboratory Diagnostics | 3 | Pass/Fail |
| SC33. | Prevention of Smoking, Drug Addiction, Alcoholism | 3 | Pass/Fail |
| SC34. | Fundamentals of Psychotherapy | 3 | Pass/Fail |
| SC35. | Medical Practice | 5 | FMA |

| | | | |
|---|--|-------------|-----------|
| SC36. | Traumatology and Orthopedics | 3 | FMA |
| SC37. | Anesthesiology and Intensive Care | 3 | FMA |
| SC38. | Plastic and reconstructive surgery | 3 | Pass/Fail |
| SC39. | Fundamentals of Sexology And Sexopathology | 3 | Pass/Fail |
| SC40. | Urgent Surgery | 6 | FMA |
| SC41. | Sectional Course | 3 | Pass/Fail |
| SC42. | Fundamentals of Medical Cosmetology | 3 | Pass/Fail |
| SC43. | Medical Practice | 4 | FMA |
| SC44. | General Practice (Family Medicine) | 3 | FMA |
| SC45. | Palliative and Hospice Medicine | 3 | Pass/Fail |
| SC46. | Endoscopic Technologies in Surgery | 3 | Pass/Fail |
| SC47. | Current Endocrinology Issues | 3 | Pass/Fail |
| SC48. | Clinical Biochemistry | 3 | Pass/Fail |
| Total volume of compulsory components | | 98,5 | |
| Physical Education | | | |
| Certification | | | |
| TOTAL VOLUME OF THE EDUCATIONAL PROFESSIONAL PROGRAM, including compulsory components (72.7%) selective components (27.3%) | | 360 | |

*CC 39 Training of reserve officers in the field of knowledge 22 "Health", specialty 222 "Medicine" is provided for higher education students-citizens of Ukraine in the amount of 9 ECTS credits.

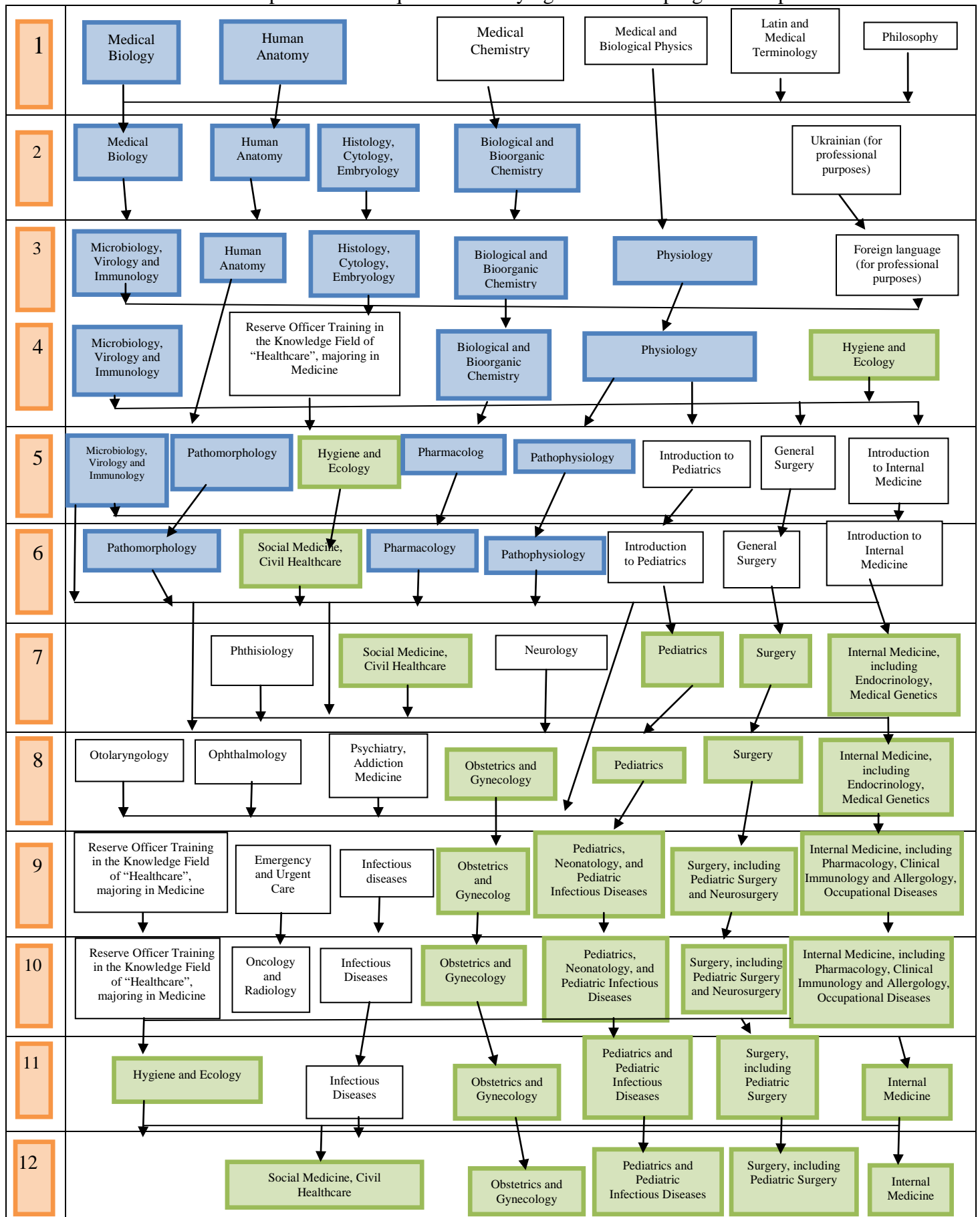
**CC 40 Ukrainian as a foreign language for professional use in the amount of 3 ECTS is provided for international higher education students and stateless persons.

**CC 41 Emergency surgery in the amount of 6 ECTS credits is provided for foreign higher education students and stateless persons.

***CC 42 Infectious, tropical and parasitic diseases in the amount of 7,5 ECTS

2.2. Cluster Diagram of EP

A brief description of the sequence of studying educational program components



- Educational components included to the "Krok 1. General Medical Training" Integrated Exam
- Educational components included to the "Krok 2. General Medical Training" Integrated Exam

3. Form of certification of higher education applicants

| | |
|--|---|
| Forms of certification of applicants for higher education | Certification according to the educational-professional training program in the specialty "Medicine" is carried out in the form of a single state qualifying exam. |
| Requirements for the unified state qualification exam | <p>The Unified State Qualification Exam is carried out in accordance with the Procedure for Conducting the Unified State Qualification Exam for the Master's Degree Applicants in the Knowledge field of Health Care and consists of the following components:</p> <ul style="list-style-type: none"> • "KROK" integrated test exam which assesses the quality of training standards of higher education and is conducted by the State Organization "Center for testing the professional competence of specialists with higher education in "Medicine" and "Pharmacy" at the Ministry of Health of Ukraine"; • an exam in English for professional purposes, which assesses professionally oriented English competence of higher education students and is conducted by the State Organization "Center for Testing Professional Competence of Specialists with Higher Education in "Medicine" and "Pharmacy" at the Ministry of Health of Ukraine"; • objective structured practical (clinical) exam, which assesses the readiness of the graduate to pursue professional activities under the requirements of the standard of higher education by demonstrating practical (clinical) components of professional competence on a real object or model and conducted by the examination commission of the higher education institution. |

Certification ends with the issuance of a diploma of the established sample on the assignment of the graduate educational qualification "Master of Medicine" and professional qualification of a Doctor. Certification is carried out openly and publicly.

4. The correspondence of program competencies to components of the educational and professional program

| CC 10 | CC 9 | CC 8 | CC 7 | CC 6 | CC 5 | CC 4 | CC 3 | CC 2 | CC 1 | EC 1 |
|-------|------|------|------|------|------|------|------|------|------|-------|
| | | + | + | + | + | | + | + | + | EC 1 |
| | | + | + | + | + | | + | + | + | EC 2 |
| | | + | + | + | | | + | + | + | EC 3 |
| | | + | | + | | | + | + | + | EC 4 |
| | + | | + | + | | | + | + | + | EC 5 |
| | | | + | + | | | + | + | + | EC 6 |
| | | | | + | | | + | + | + | EC 7 |
| | | | | + | | | + | + | + | EC 8 |
| | | | | + | | | + | + | + | EC 9 |
| | | | | + | | | + | + | + | EC 10 |
| | | | | + | | | + | + | + | EC 11 |
| | | | | + | | | + | + | + | EC 12 |
| | | | | + | | | + | + | + | EC 13 |
| | | | | + | | | + | + | + | EC 14 |
| | | | | + | | | + | + | + | EC 15 |
| | | | | + | | | + | + | + | EC 16 |
| | | | | + | | | + | + | + | EC 17 |
| | | + | + | + | | | + | + | + | EC 18 |
| | | + | + | + | | | + | + | + | EC 19 |
| | + | | + | + | | | + | + | + | EC 20 |
| | | | + | + | | | + | + | + | EC 21 |
| | | | + | + | | | + | + | + | EC 22 |
| | | | | + | | | + | + | + | EC 23 |
| | | | + | + | | | + | + | + | EC 24 |
| | + | | + | + | | | + | + | + | EC 25 |
| | | | + | + | | | + | + | + | EC 26 |
| | | | + | + | | | + | + | + | EC 27 |
| | | | + | + | | | + | + | + | EC 28 |
| | | | | + | | | + | + | + | EC 29 |
| | | | | + | | | + | + | + | EC 30 |
| | | | | + | | | + | + | + | EC 31 |
| | | | | + | | | + | + | + | EC 32 |
| | | | | + | | | + | + | + | EC 33 |
| | | | | + | | | + | + | + | EC 34 |
| | | | | + | | | + | + | + | EC 35 |
| | | | | + | | | + | + | + | EC 36 |
| | | | | + | | | + | + | + | EC 37 |
| | | | | + | | | + | + | + | EC 38 |
| | + | | | + | | | + | + | + | EC 39 |

| SC 11 | SC 10 | SC 9 | SC 8 | SC 7 | SC 6 | SC 5 | SC 4 | SC 3 | SC 2 | SC 1 | EC 1 |
|-------|-------|------|------|------|------|------|------|------|------|------|-------|
| | | | | | | | | | | + | EC 1 |
| | | | | | | | | + | | + | EC 2 |
| | | | | | | | | | | + | EC 3 |
| | | | | | + | | | | | | EC 4 |
| + | | | | | | | | | + | | EC 5 |
| | | | | | | | | | + | | EC 6 |
| | | | | | | + | | | + | | EC 7 |
| | | | | | | + | | | + | | EC 8 |
| + | | | | | | | + | + | | | EC 9 |
| + | | | | | | | + | + | | | EC 10 |
| + | | | | | | | + | + | | | EC 11 |
| + | | | | | | | + | + | | | EC 12 |
| | | | | | | | | | + | | EC 13 |
| | | | | | | | | | + | | EC 14 |
| | | | | | | | | | | | EC 15 |
| | + | | | | | | | | | | EC 16 |
| | | | | | | | | | | + | EC 17 |
| | | | | | | | | | | + | EC 18 |
| | | | | | | | | | | + | EC 19 |
| + | | | | | | | | | | + | EC 20 |
| + | + | | | | | | | | | + | EC 21 |
| + | + | | | | | | | | | + | EC 22 |
| + | + | | | | | | | | | + | EC 23 |
| + | + | | | | | | | | | + | EC 24 |
| + | | | | | | | | | | + | EC 25 |
| + | | | | | | | | | | + | EC 26 |
| + | | | | | | | | | | + | EC 27 |
| + | + | | | | | | | | | + | EC 28 |
| + | + | | | | | | | | | + | EC 29 |
| | | | | | | | | | | + | EC 30 |
| + | | | | | | | | | | + | EC 31 |
| + | | | | | | | | | | + | EC 32 |
| + | | | | | | | | | | + | EC 33 |
| + | | | | | | | | | | + | EC 34 |
| + | | | | | | | | | | + | EC 35 |
| + | + | | | | | | | | | + | EC 36 |
| + | | | | | | | | | | + | EC 37 |
| + | | | | | | | | | | + | EC 38 |
| + | + | | | | | | | | | + | EC 39 |

5. Matrix for providing program learning outcomes (PLO) with relevant components of the educational and professional program

| PLO 10 | PLO 9 | PLO 8 | PLO 7 | PLO 6 | PLO 5 | PLO 4 | PLO 3 | PLO 2 | PLO 1 | EC 1 |
|--------|-------|-------|-------|-------|-------|-------|-------|-------|-------|-------|
| | | | | | | + | | + | | EC 2 |
| | | | | | | | | + | | EC 3 |
| | | | + | | | | | | + | EC 4 |
| | | | | | | | + | | | EC 5 |
| | | | | | | | + | | | EC 6 |
| | | | + | + | | | + | | + | EC 7 |
| | | | + | | | | + | | + | EC 8 |
| | | + | + | | + | + | | | + | EC 9 |
| | | + | + | | + | + | | | + | EC 10 |
| | | + | + | | + | + | | | + | EC 11 |
| | | + | + | | + | + | | | + | EC 12 |
| | | | + | | | + | + | | + | EC 13 |
| | | | + | | | + | + | | + | EC 14 |
| + | + | + | + | + | | | | | + | EC 15 |
| | | | + | + | + | | | + | + | EC 16 |
| | | | | | + | + | + | + | + | EC 17 |
| | | + | | | + | + | + | + | + | EC 18 |
| | | + | + | | + | + | + | + | + | EC 19 |
| + | + | + | + | + | + | + | + | + | + | EC 20 |
| + | + | + | + | + | + | + | + | + | + | EC 21 |
| + | + | + | + | + | + | + | + | + | + | EC 22 |
| + | + | + | + | + | + | + | + | + | + | EC 23 |
| + | + | + | + | + | + | + | + | + | + | EC 24 |
| + | + | + | + | + | + | + | + | + | + | EC 25 |
| + | + | + | + | + | + | + | + | + | + | EC 26 |
| + | + | + | + | + | + | + | + | + | + | EC 27 |
| + | + | + | + | + | + | + | + | + | + | EC 28 |
| + | + | + | + | + | + | + | + | + | + | EC 29 |
| | | | | | | | | + | + | EC 30 |
| + | + | + | + | + | + | + | + | + | + | EC 31 |
| + | + | + | + | + | + | + | + | + | + | EC 32 |
| + | + | + | + | + | + | + | + | + | + | EC 33 |
| + | + | + | + | + | + | + | + | + | + | EC 34 |
| + | + | + | + | + | + | + | + | + | + | EC 35 |
| + | + | + | + | + | + | + | + | + | + | EC 36 |
| + | + | + | + | + | + | + | + | + | + | EC 37 |
| + | + | + | + | + | + | + | + | + | + | EC 38 |
| + | + | + | + | + | + | + | + | + | + | EC 39 |

List 1 (syndromes and symptoms)

1. amenorrhea
2. anemic syndrome
3. anuria and oliguria
4. hypertension
5. arterial hypotension
6. chest pain
7. abdominal pain
8. pain in the extremities and back
9. pain in the perineum
10. sore throat
11. vomiting
12. bronchoobstructive syndrome
13. bulbar syndrome
14. effusion into the pleural cavity
15. hallucinatory-paranoid syndrome
16. fever
17. hemorrhagic syndrome
18. hepatomegaly and hepatorenal syndrome
19. redness
20. headache
21. dysuria
22. dysmenorrhea
23. dyspepsia
24. dysphagia
25. diarrhea
26. exanthema, enanthema
27. jaundice
28. shortness of breath
29. asphyxia
30. constipation
31. dizziness
32. cardiomegaly
33. cough
34. intestinal obstruction
35. hemoptysis
36. lymphadenopathy
37. meningeal syndrome
38. uterine bleeding
39. melanorrhea
40. edematous syndrome
41. paresis, paralysis
42. polyuria
43. portal hypertension
44. speech disorders (aphasia)
45. heart rhythm and conductivity disorders
46. consciousness disorders
47. itchy skin
48. urinary syndrome
49. dementia syndrome
50. dehydration syndrome
51. indigestion syndrome
52. stridor
53. joint syndrome
54. convulsions
55. weight loss
56. cyanosis
57. partial or complete vision loss
58. partial or complete hearing loss
59. gastrointestinal bleeding
60. fluctuation

List 2 (diseases)

I) Blood and blood-forming organ diseases, disorders involving the immune mechanism:

1. anemia
2. hemolytic disease of newborns
3. hemophilia
4. leukemia
5. lymphoma
6. congenital (Bruton's disease, Viscot-Aldridge syndrome) and acquired immunodeficiency states
7. neonatal sepsis
8. surgical sepsis
9. idiopathic thrombocytopenic purpura
10. chronic radiation injuries

II) Mental and behavioral disorders:

11. bipolar affective disorder
12. acute psychosis, delirium tremens
13. epilepsy
14. neurotic disorders
15. personality disorders
16. schizophrenia

III) The nervous system diseases:

17. intracranial trauma
18. meningitis, encephalitis
19. migraine and other types of headaches
20. perinatal encephalopathy
21. the autonomic nervous system disorders
22. cerebral circulatory disorders
23. vertebrogenic diseases of the nervous system, neuropathy, and polyneuropathy
24. multiple sclerosis

25. chronic occupational injuries (vibration disease, occupational dyskinesias)

Eye diseases

26. blepharitis
27. acute glaucoma attack
28. conjunctivitis
29. foreign body of the eye
30. eye injuries
31. retinopathy

ENT diseases

32. laryngitis
33. otitis
34. paratonsillar abscess
35. sinusitis
36. Tonsillitis

IV) The cardiovascular system diseases:

37. aortic aneurysms
38. atherosclerosis
39. varicose veins of the lower extremities
40. congenital heart disease
41. secondary arterial hypertension
42. acute occlusion of the main and peripheral arteries;
43. endocarditis
44. essential and secondary hypertension
45. coronary heart disease
46. carditis
47. cardiomyopathy
48. pulmonary heart
49. acquired heart defects
50. obliterating endarteritis
51. pericarditis
52. cardiac arrhythmias and conduction
53. heart failure
54. the heart and blood vessel injuries
55. pulmonary embolism
56. phlebitis, thrombophlebitis

V) Respiratory and mediastinal diseases:

57. asphyxia
58. bronchial asthma
59. bronchitis
60. bronchiectasis
61. bronchopulmonary dysplasia
62. congenital malformations of the respiratory system
63. respiratory failure
64. infectious and destructive lung diseases
65. pulmonary insufficiency
66. mediastinitis
67. cystic fibrosis
68. neoplasms of the lungs and mediastinum
69. Pleurisy
70. Pneumoconiosis
71. Pneumonia
72. Pneumothorax
73. respiratory distress syndrome and neonatal pneumonia
74. foreign body in the respiratory tract
75. chest injuries (superficial, open)
76. chronic obstructive pulmonary disease

VI) The digestive system diseases:

77. rectal prolapse
78. peptic ulcer disease
79. congenital malformations of the digestive system
80. gastroesophageal reflux disease, esophagitis
81. gastritis, duodenitis
82. acute and chronic hepatitis
83. acute intestinal obstruction

84. acute and chronic appendicitis
85. acute and chronic pancreatitis
86. benign diseases of the esophagus
87. enteritis, colitis
88. inflammatory diseases of the rectum and perianal area
89. pinched and uncompressed abdominal hernias
90. neoplasms of the esophagus, stomach, colon, liver, and pancreas
91. peptic ulcers of the stomach and duodenum
92. peritonitis
93. perforation of the hollow organ
94. liver failure
95. malabsorption syndrome
96. pyloric stenosis hole
97. abdominal injuries (superficial, open)
98. functional gastrointestinal disorders
99. diseases of the operated stomach
100. cholecystitis, cholangitis, gallstone disease, choledocholithiasis
101. cirrhosis
102. gastrointestinal bleeding

VII) Diseases of the genitourinary system:

103. renal amyloidosis
104. balanitis, balanoposthitis
105. congenital malformations of the urinary system
106. glomerulonephritis
107. dysmetabolic nephropathy
108. nephrotic syndrome
109. neoplasms of the kidney, urinary tract, and prostate
110. pyelonephritis
111. prostatitis
112. urolithiasis
113. tubulointerstitial nephritis
114. urethritis
115. chronic kidney disease
116. cystitis

VIII) Diseases of the skin and subcutaneous tissue:

- 117. allergodermatoses (dermatitis, toxidermia, eczema)
- 118. abscess, phlegmon
- 119. bacterial diseases of the skin and subcutaneous tissue, pyoderma
- 120. purulent-inflammatory diseases of the fingers and hands
- 121. purulent-inflammatory diseases in children and newborns
- 122. acute lymphangitis
- 123. carbuncle, boil
- 124. mycoses
- 125. burns and frostbites
- 126. parasitic skin diseases (scabies, lice)
- 127. psoriasis
- 128. vesicular dermatoses
- 129. specific surgical infection (anaerobic clostridial and non-clostridial)

IX) Diseases of the musculoskeletal system and connective tissue:

- 130. ankylosing spondylitis
- 131. congenital and acquired malformations of the musculoskeletal system
- 132. acute rheumatic fever
- 133. dermatomyositis and topolymyositis
- 134. neoplasms of the musculoskeletal system
- 135. osteoarthritis
- 136. osteomyelitis
- 137. gout
- 138. polytrauma
- 139. reactive arthritis
- 140. rheumatoid arthritis
- 141. systemic scleroderma
- 142. systemic lupus erythematosus
- 143. systemic vasculitis (nodular polyarteritis, hemorrhagic vasculitis, hypersensitive vasculitis)

- 144. typical fractures of the bones of the shoulder, forearm, hand, thigh, leg, foot
- 145. pelvic injury
- 146. spinal cord injury
- 147. damage to large joints (hip, knee, ankle, elbow)
- 148. chronic rheumatic disease
- 149. juvenile rheumatoid arthritis

X) Diseases of the endocrine system, eating disorders, and metabolic disorders:

- 150. acromegaly
- 151. thymic hyperplasia
- 152. hypothyroidism
- 153. malnutrition, protein-energy deficiency
- 154. pituitary dwarfism
- 155. diffuse toxic goiter
- 156. iodine deficiency diseases of the thyroid gland
- 157. diabetes insipidus
- 158. neoplasm of the thyroid gland
- 159. adiposity
- 160. congenital dysfunction of the adrenal cortex
- 161. rickets, spasmophilia
- 162. hereditary metabolic diseases (phenylketonuria)
- 163. hereditary chromosomal abnormalities (Down's disease, Shereshevsky-Turner syndrome)
- 164. thyroiditis
- 165. thyrotoxicosis
- 166. Itsenko-Cushing's disease and syndrome
- 167. chronic adrenal insufficiency
- 168. diabetes mellitus

XI) Infectious and parasitic diseases:

- 169. bacterial food poisoning
- 170. erysipelas
- 171. botulism
- 172. viral hepatitis
- 173. varicella
- 174. congenital infections of the newborn
- 175. helminthiasis
- 176. herpesvirus diseases
- 177. influenza and other acute respiratory viral infections
- 178. Diphtheria

179. infectious mononucleosis
180. candidiasis
181. whooping cough
182. intestinal bacterial infections
183. intestinal viral infections
184. measles
185. tick-borne viral encephalitis
186. rubella
187. leptospirosis
188. malaria
189. meningococcal infection
190. especially dangerous viral infections
191. mumps infection
192. poliomyelitis
193. tetanus
194. protozoan infections
195. rickettsiosis
196. anthrax
197. rabies
198. scarlet fever
199. tuberculosis of different localization
200. lyme disease
201. human immunodeficiency virus (HIV) disease
202. chlamydial infections
203. cholera
204. plague
- infectious diseases transmitted mainly sexually:
205. gonococcal infection
206. syphilis

XII) Diseases of the female reproductive system and pregnancy pathologies:

207. multiple pregnancies
208. vomiting in pregnant women
209. pregnancy in extragenital pathology
210. fetal distress during pregnancy
211. fetal growth retardation
212. immune conflict during pregnancy
213. bubble drift
214. placenta previa
215. premature detachment of the placenta
216. premature birth and delayed pregnancy
217. ectopic pregnancy
218. preeclampsia and eclampsia
219. miscarriage
- pathologies of childbirth and the postpartum period:*
220. anomalies of labor
221. pelvic abnormalities, including the clinically narrow pelvis
222. fetal distress during childbirth
223. maternity and postpartum hemorrhage
224. incorrect position and presentation of the fetus
225. postpartum septic diseases
226. injuries of the uterus and birth canal
- gynecological diseases:*
227. abnormal uterine bleeding
228. ovarian apoplexy
229. infertility (fertility)
230. congenital malformations of the female genitalia
231. benign thoracic dysplasia
232. benign and precancerous neoplasms of the female genitalia
233. endometriosis
234. inflammatory diseases of the female genital organs
235. malignant neoplasms of the female genitalia
236. mastitis
237. neuroendocrine syndromes
238. breast tumors

List 3 (emergencies):

1. asphyxia (including neonatal)
2. hypertensive crisis
3. acute respiratory failure
4. acute urinary retention
5. acute adrenal insufficiency
6. acute kidney damage
7. acute liver failure
8. acute heart failure
9. acute poisoning, including combat poisons
10. acute psychosis
11. acute coronary syndrome
12. acute radiation and chemical lesions, including in the field and emergencies
13. acute cerebral insufficiency
14. electrotrauma
15. epileptic status
16. acute bleeding
17. acute blood loss syndrome, including in the field and emergencies
18. cardiac arrest
19. collapse
20. disturbances of consciousness and coma
21. renal colic
22. biliary colic
23. acute anaphylactic reactions
24. acute cardiac disorders
25. rhythm, cold injury, including in the field
26. thermal injury, incl. in the field
27. convulsive syndrome
28. drowning
29. strangulation asphyxia
30. normal birth
31. shocks
32. bites of snakes, insects, other animals
33. penetrating wounds, including inflicted in hostilities
34. burns, including in the field
35. foreign bodies of the respiratory tract, gastrointestinal tract, ENT organs, and eyes

List 4 (laboratory and instrumental analyses)

1. analysis of pleural fluid
2. analysis of ascitic fluid
3. analysis of synovial fluid
4. urine analysis according to Zymnysky
5. urine analysis according to Nechiporenko
6. alpha-amylase activity in blood and urine, fecal elastase1
7. blood proteins and their fractions, C-reactive protein
8. blood glucose, glycosylated hemoglobin,
9. oral glucose tolerance test
10. blood lipids and lipoproteins and their fractions
11. blood hormones
12. serum ferritin, iron, and copper
13. creatinine, urea of blood and urine, glomerular filtration rate
14. blood electrolytes
15. blood aminotransferases
16. total blood bilirubin and its fractions
17. coagulogram
18. blood uric acid
19. alkaline blood phosphatase
20. histomorphological examination of lymph node biopsy
21. histomorphological examination of the biopsy of parenchymal organs
22. histomorphological examination of a biopsy of mucous membranes
23. histomorphological examination of muscle and skin biopsy
24. examination of indoor environment (indicators of microclimate, natural and artificial lighting, bacteriological and chemical air pollution)
25. examination of the external respiration function
26. standard ECG (in 12 leads)
27. endoscopic examination of the bronchi
28. endoscopic examination of the digestive tract
29. echocardiography and Doppler
30. general analysis of feces
31. general analysis of blood
32. general analysis of urine
33. general analysis of the cerebrospinal fluid
34. general analysis of sternal punctuation
35. general analysis of sputum
36. general immunological blood profile
37. serological reactions for infectious diseases
38. express tests for viral diseases
39. amplification methods applied to infectious diseases (PCR, LCR)
40. serological reactions in autoimmune diseases
41. chemical and bacteriological studies of the human environment (air, water, soil).
42. microbiological study of biological fluids and secretions
43. radiation measurement (sound, vibration, ionizing), individual radiometry.
44. methods of instrumental visualization of the thyroid gland
45. radiopaque angiography
46. methods of instrumental visualization of abdominal organs
47. methods of instrumental visualization of the thoracic cavity
48. methods of instrumental visualization of the genitourinary system
49. methods of instrumental visualization of the skull, spine, spinal cord, bones, and joints
50. methods of instrumental visualization of the breast
51. tuberculin diagnostics
52. multi-moment fractional examination of bile and pH-metry of the stomach and esophagus
53. chemical, organoleptic, bacteriological examination of food and drinking water
54. cytological examination of the cervix
55. measurement of ergonomic indicators of difficulty and intensity of work

List 5 (medical manipulations):

1. performing indirect heart massage
2. performing artificial respiration
3. performing defibrillation using a manual automatic defibrillator-cardioverter
4. registering a standard ECG in 12 leads
5. temporarily stopping external bleeding
6. carrying out primary surgical treatment of the wound, dressing, removal of skin sutures, including in the field
7. applying bandages, including in the field
8. installing a nasogastric and orogastric tube
9. carrying out transport immobilization
10. administering drugs (intravenous jet and drip, intraosseous), including in the field
11. providing peripheral venous access
12. measuring blood pressure
13. restoring airway patency
14. catheterizing the bladder with a soft probe
15. performing nasal tamponade
16. performing the "skin to skin" technique of contact with the newborn and early breast nursing
17. carrying out finger examination of a rectum and by means of a rectal mirror
18. performing a finger examination of the prostate
19. carrying out clinical examination of mammary glands
20. performing a pleural puncture
21. determining blood groups, rhesus factor
22. transfusing blood components and blood substitutes
23. conducting bimanual examination and examination of a woman with mirrors
24. performing pelviometry;
25. carrying out external (Leopold's maneuvers) and internal obstetric examination;
26. carrying out auscultation of a fetus
27. taking smears for bacterioscopic, bacteriological and cytological examinations